

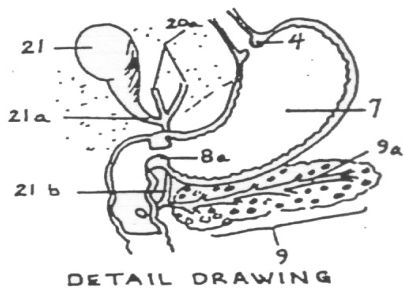
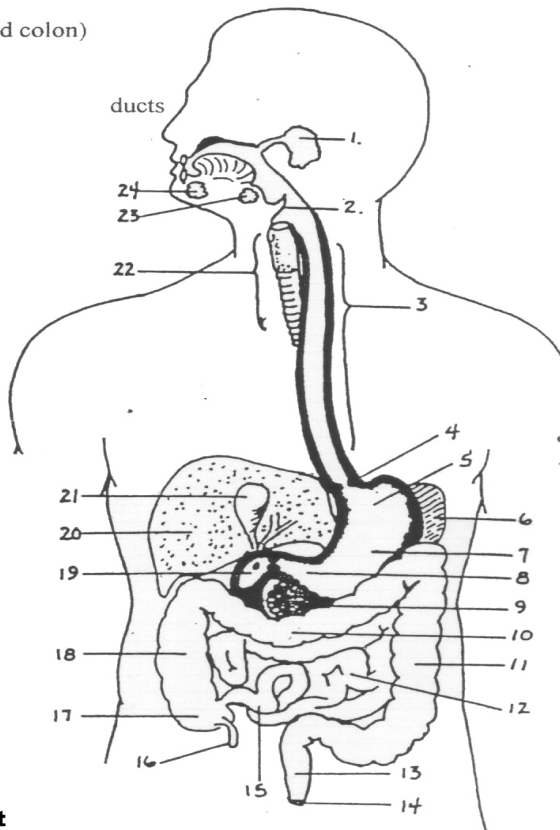
**Activity: Digestive System**

- Label the accompanying diagram using your text book **and** any other sources in the classroom.
- Prepare a chart in your notebook listing the following organs and its **function** in digestion (be specific - enzymes produced or secreted, etc.) for the following:(utilize other sources of information in the classroom)

mouth	teeth	tongue	esophagus
stomach	sphincter muscles of the stomach (2)		
small intestine (duodenum, jejunum, ileum)			
large intestine (ascending, transverse, descending sigmoid colon)			
rectum	anus		

liver	pancreas	gall bladder	ducts
-------	----------	--------------	-------

- |                                     |                                     |
|-------------------------------------|-------------------------------------|
| <b>1: Parotid Gland</b>             | <b>2: Epiglottis</b>                |
| <b>3: Esophagus</b>                 | <b>4: Cardiac Sphincter</b>         |
| <b>5: Cardiac Region of Stomach</b> | <b>7: Stomach</b>                   |
| <b>6: Spleen</b>                    | <b>8: Pyloric Region of Stomach</b> |
| <b>8a: Pyloric Sphincter</b>        | <b>9: Pancreas</b>                  |
| <b>9a: Pancreatic Duct</b>          | <b>10: Transverse Colon</b>         |
| <b>11: Descending Colon</b>         | <b>13: Rectum</b>                   |
| <b>12: Jejunum</b>                  | <b>15: Ilium</b>                    |
| <b>14: Anus</b>                     | <b>17: Caecum</b>                   |



- |                              |   |
|------------------------------|---|
| <b>18: Ascending Colon</b>   | <b>19: Duodenum</b>                           |
| <b>20: Liver</b>             | <b>20a: Hepatic Duct</b>                      |
| <b>21: Gall Bladder</b>      | <b>21a: Cystic Duct</b>                       |
| <b>21b: Common Bile Duct</b> |   |
| <b>22: Trachea</b>           | <b>23: Submaxillary (Submandibular) Gland</b> |
| <b>24: Sublingual Gland</b>  |   |