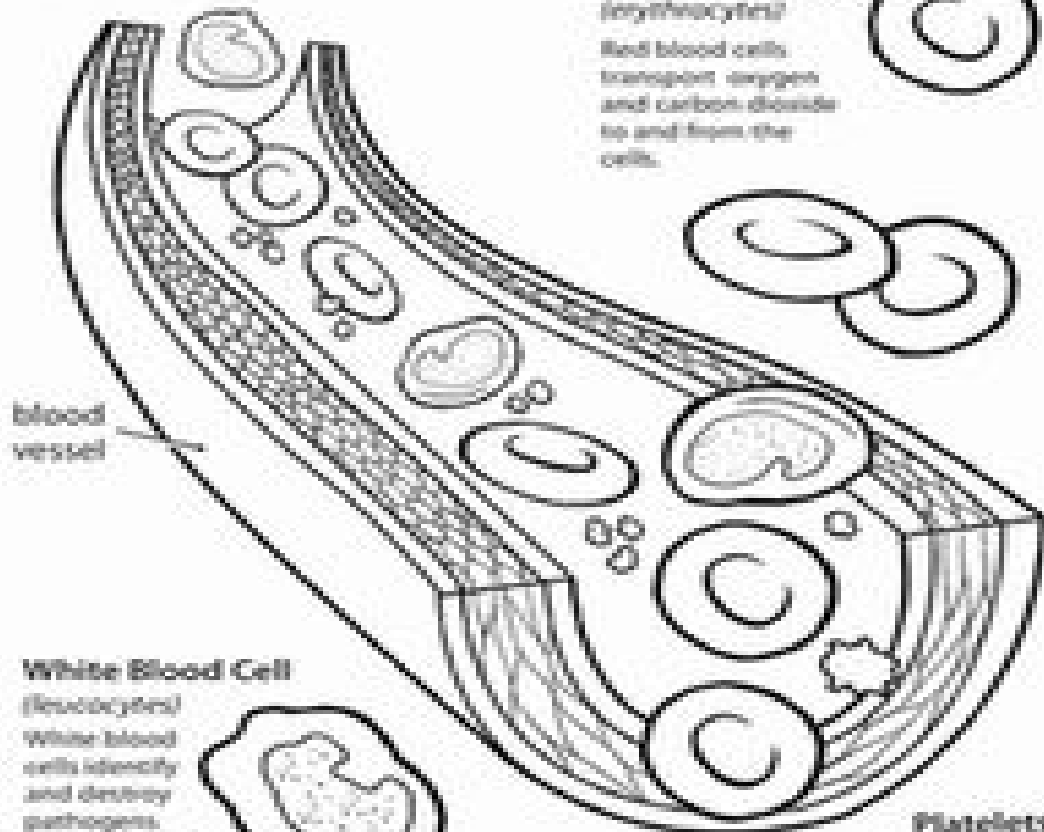
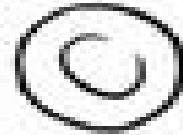


Blood



Red Blood Cells (erythrocytes)

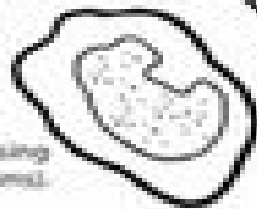
Red blood cells transport oxygen and carbon dioxide to and from the cells.



blood vessel

White Blood Cell (leucocytes)

White blood cells identify and destroy pathogens (disease-causing microorganisms).



Platelets (thrombocytes)

Platelets are involved in blood clotting and repair and regeneration of connective tissue.

