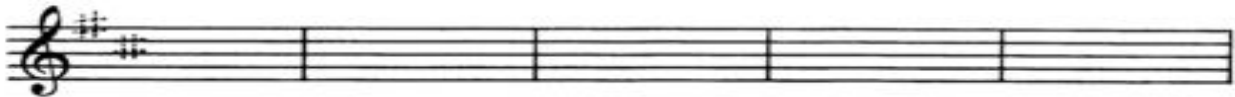


33. DRAW A KEY SIGNATURE

In measure 1, trace the sharps of the D Major key signature. In measures 2, 3, 4 and 5, write your clef and the key signature for D Major.



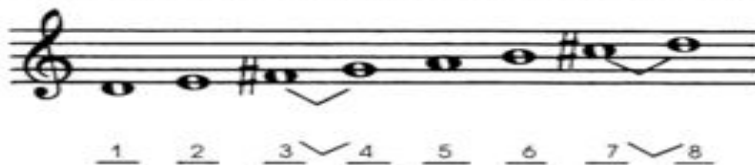
34. LEARN ABOUT TETRACHORDS

A tetrachord is a four note scale. A major tetrachord has a ½ step between the 3rd and 4th notes and forms the first four or last four notes of a major scale. The example below shows major tetrachords beginning on the open D and A string.



35. LEARN ABOUT MAJOR SCALES

A major scale is built by joining two major tetrachords. Therefore, a major scale has half steps between the third and fourth notes and the seventh and eighth notes. Circle each major tetrachord on the scale below.



36. DRAW A CLEF, TIME SIGNATURE AND NOTES

Draw your clef, a time signature and the notes as requested. Be sure each measure has the correct number of beats.

