




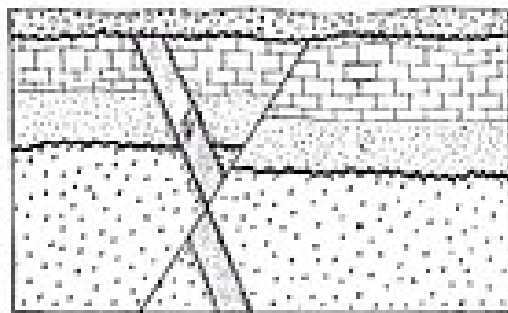
Outcrop #1



-  - Limestone
-  - Shale
-  - Sandstone
-  - Granite
-  - Basalt
-  - Conglomerate
-  - Siltstone

 contact
 metamorphism
 unconformity

Outcrop #2



-  Unconsolidated glacial deposits (silt)
-  Limestone
-  Sandstone
-  Granite
-  Gabbro
-  Contact Metamorphic