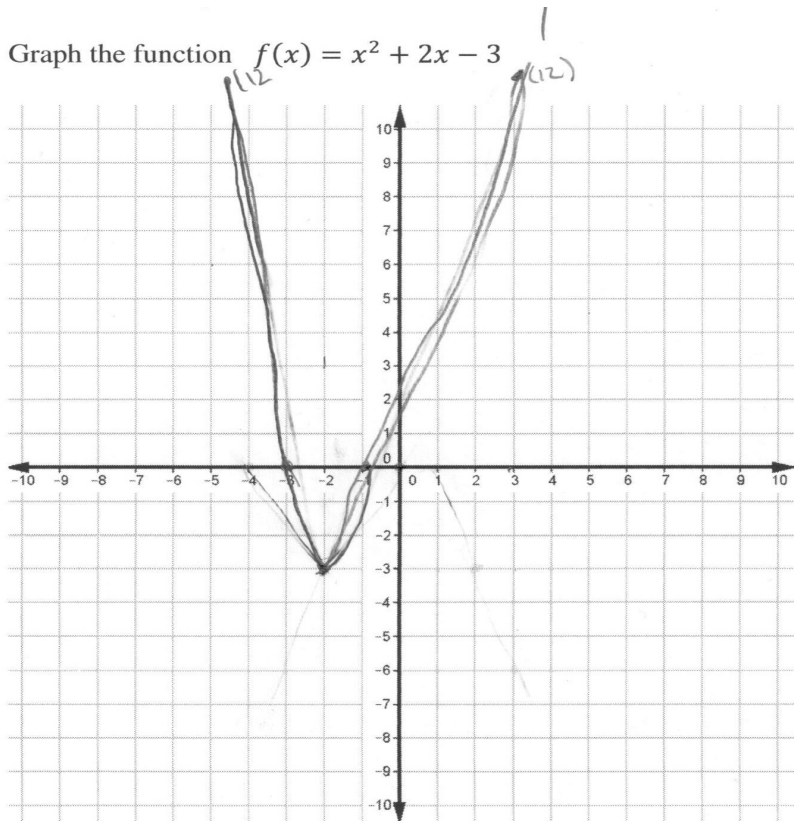


Graph the function $f(x) = x^2 + 2x - 3$



$$f(x) = x^2 + 2x - 3$$

x	y
-3	0
1	0
2	-3
3	12
4	
5	

1. What are the zeros of this function? Where on the graph are the zeros of the function located?

~~(-3, 0), (1, 0), (0, 0)~~
~~(-3, 0), (-1, 0)~~

2. Does this function have a maximum? If so, where is it?

~~Yes~~. No. this is a minimum.

3. Does this function have a minimum? If so, where is it?

Yes (-2, -3) min.