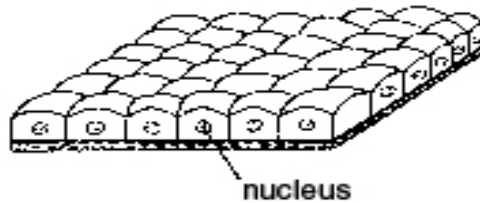


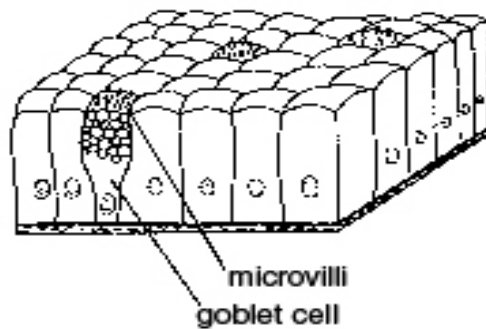
simple squamous epithelium

Cells: single (scalelike) layer
Nuclei: flattened, centrally located
Functions: diffusion, lubrication



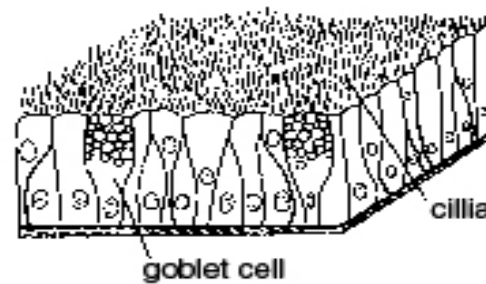
simple cuboidal epithelium

Cells: single (squarelike) layer
Nuclei: centrally located and spherical
Functions: absorption, secretion, protection



simple columnar epithelium

Cells: tall, single-layered
Nuclei: basally located and elongated
Functions: absorption, secretion, protection
(May bear cilia and may contain goblet cells with microvilli)



pseudostratified epithelium

Cells: differ in height, not all cells reach the apical surface
Nuclei: at various positions
Functions: absorption, secretion, transportation

Epithelial Tissues