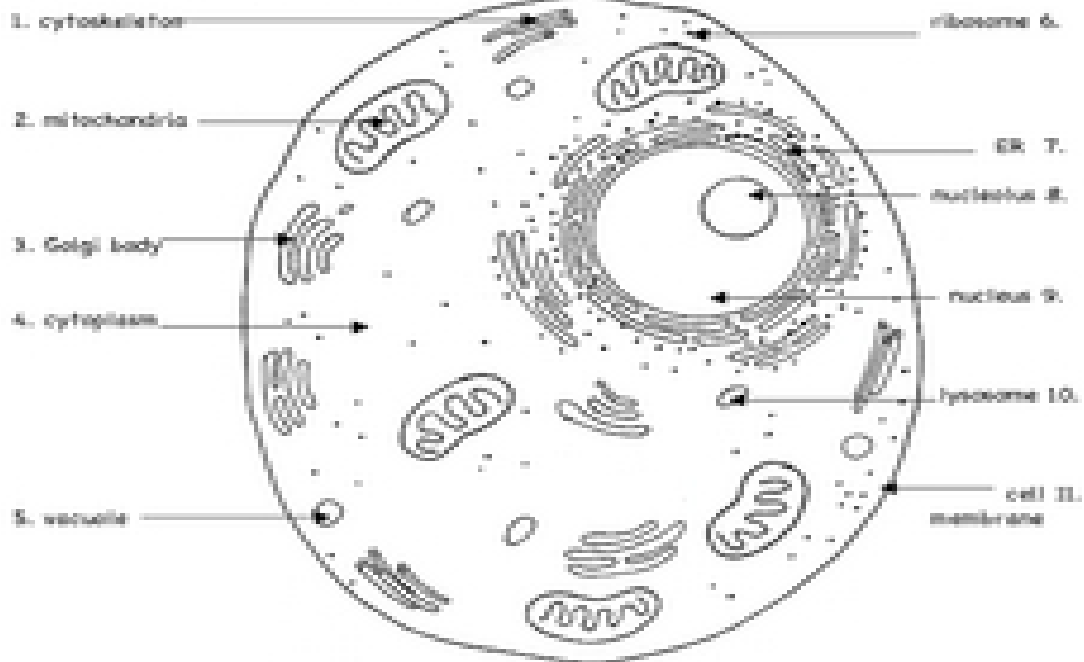


The Animal Cell to Color

Name: _____

Color the animal cell drawn below. Use the colors indicated in the box.

(Note: The lysosomes are oval and the vacuoles are more rounded.)

**Parts of an animal cell:**

cell membrane = surrounds the internal cell parts; controls passage of materials in and out of the cell
cytoplasm = everything inside of the cell membrane except for the nucleus (light yellow)
nucleus = control center of the cell; contains DNA (light pink)
nucleolus = composed of protein and RNA; involved in ribosome production (dark pink)
cytoskeleton = provides strength and shape to the cell; network of protein fibers (orange)
endoplasmic reticulum (ER) = passageways that transport proteins within the cell (purple)
mitochondria = produces energy (rust or red)
vacuole = vesicle that provides storage of water and other materials (blue)
lysosome = vesicle that contains substances that break down materials (blue)
Golgi body = packages and transports proteins from the ER to other parts of the cell (pink)
ribosomes (the dots) = where proteins are made in the cell