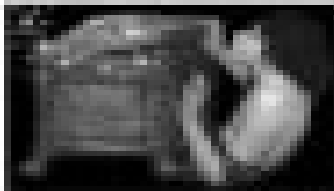
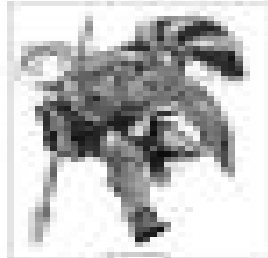


Greek Mythology



1



2



3



4

Q Complete the blanks and match the images with the descriptions.

*Ares – war – (Eros – love – god – Hermes – messenger – Hermes – messenger – wings – Aphrodite – shield – eagle – sword

Hades was the roman discovery by the gods to keep the _____ that contain all the bad things of the world.

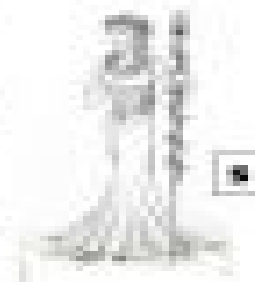
Pan was the _____ of shepherds and flocks, of mountain wilds, hunting and rustic music. He was the father of the hills and mountains of Asia and Europe for his goat-like horns. He was part _____ and part human.

Hermes is known as a messenger of the gods. He was the son of _____ and Athena. He is credited with the invention of the _____ and the _____.

Eros was the god of _____ His symbols are the _____, the _____ and feathers.

Zeus was the god of the sky, the king of the gods, ruler of _____ His symbols are a _____, an _____ and a bolt of lightning.

_____ was the goddess of love and beauty. Her symbols are the _____, the apple and the dove.



5



6