

VERTEBRAE

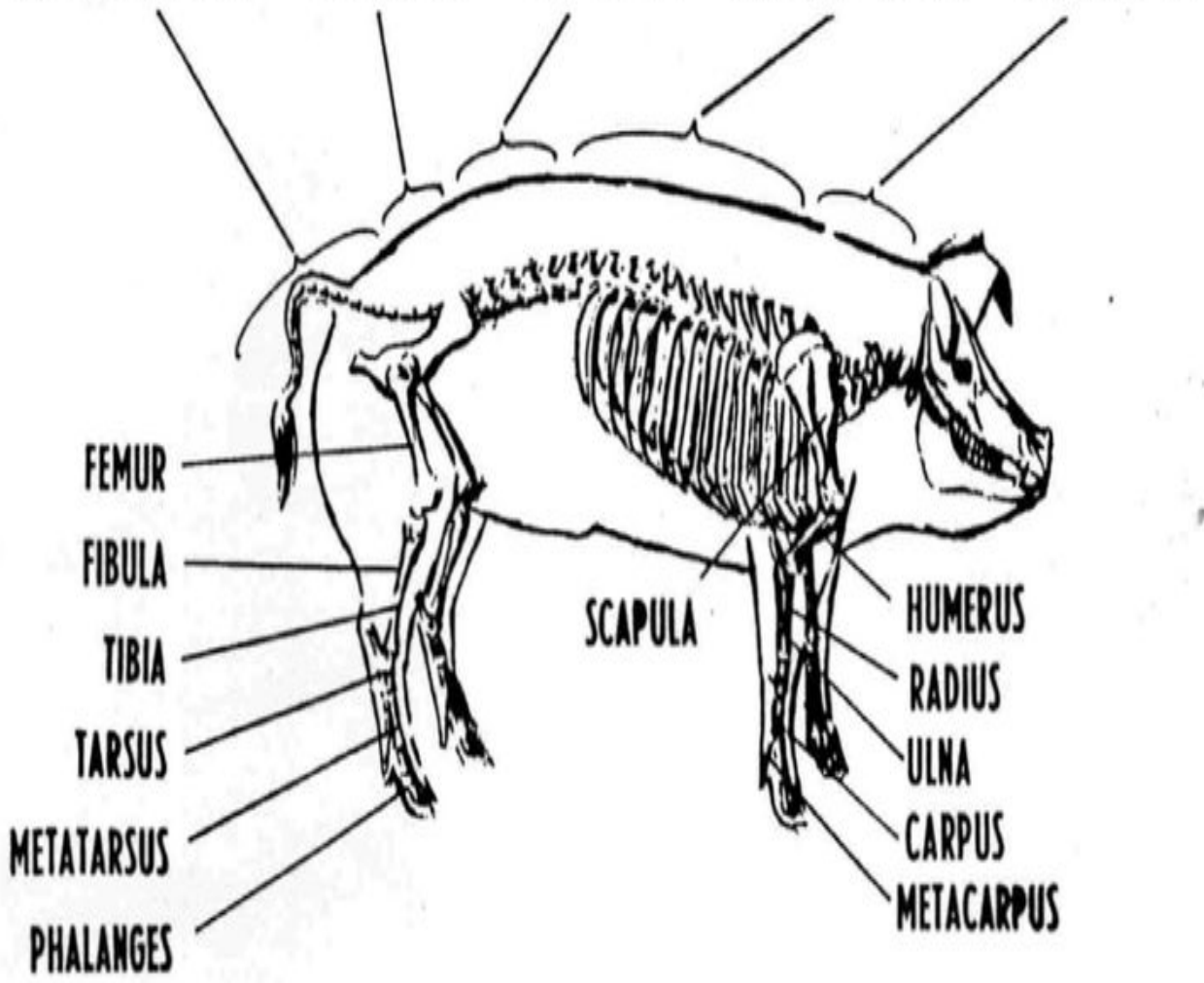
COCYGEAL (20-23)

SACRAL (4)

LUMBAR (6)

THORACIC (14-15)

CERVICAL (7)



FEMUR

FIBULA

TIBIA

TARSUS

METATARSUS

PHALANGES

SCAPULA

HUMERUS

RADIUS

ULNA

CARPUS

METACARPUS