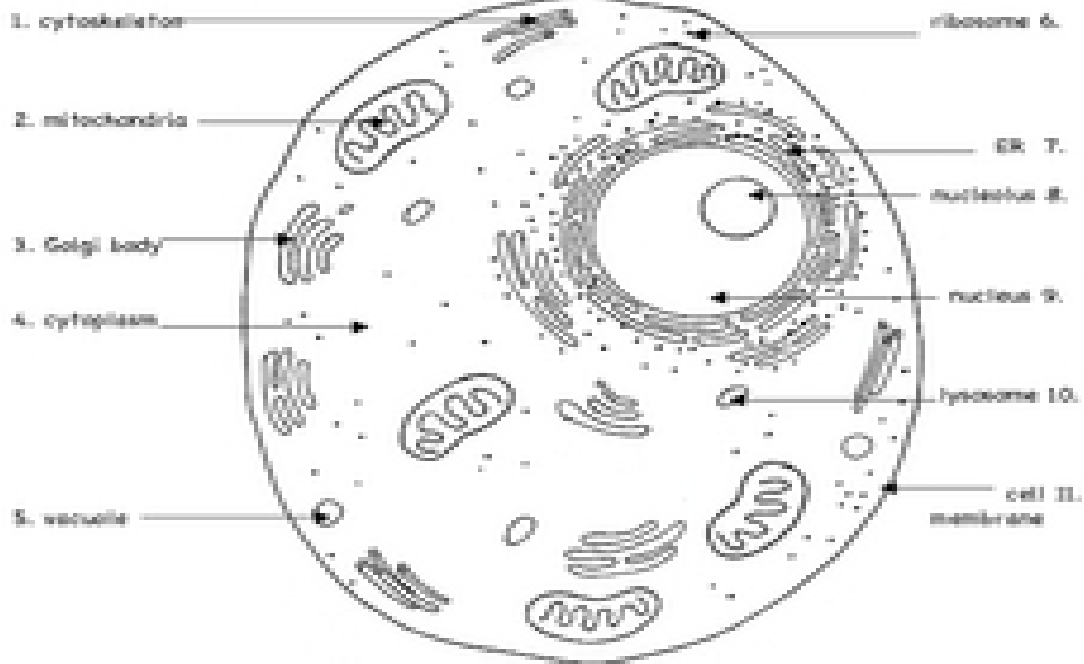


## The Animal Cell to Color

Name: \_\_\_\_\_

Color the animal cell drawn below. Use the colors indicated in the box.

(Note: The lysosomes are oval and the vacuoles are more rounded.)

**Parts of an animal cell:**

**cell membrane** = surrounds the internal cell parts; controls passage of materials in and out of the cell  
**cytoplasm** = everything inside of the cell membrane except for the nucleus (light yellow)  
**nucleus** = control center of the cell; contains DNA (light pink)  
**nucleolus** = composed of protein and RNA; involved in ribosome production (dark pink)  
**cytoskeleton** = provides strength and shape to the cell; network of protein fibers (orange)  
**endoplasmic reticulum (ER)** = passageways that transport proteins within the cell (purple)  
**mitochondria** = produces energy (rust or red)  
**vacuole** = vesicle that provides storage of water and other materials (blue)  
**lysosome** = vesicle that contains substances that break down materials (blue)  
**Golgi body** = packages and transports proteins from the ER to other parts of the cell (pink)  
**ribosomes** (the dots) = where proteins are made in the cell