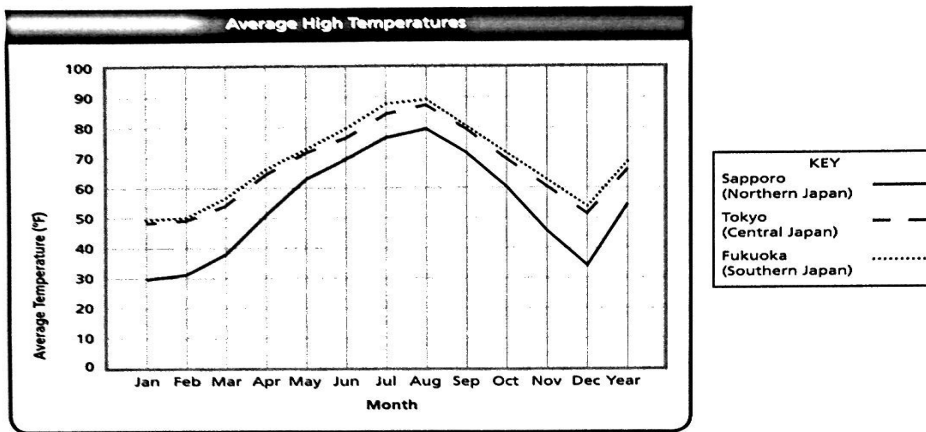


Name \_\_\_\_\_ Class \_\_\_\_\_ Date \_\_\_\_\_

## Enrichment: Japan's Temperatures

**Directions** Below is a graph that shows the average high temperatures for the cities of Sapporo on the northern island of Hokkaido, Tokyo on the central island of Honshu, and Fukuoka on the southern island of Kyushu. Study the graph and then answer the questions.



1. What is the highest average temperature shown on the above graphs? When and where did it occur?

\_\_\_\_\_

2. What is the lowest average temperature shown? When and where did it occur?

\_\_\_\_\_

3. Is there more of a difference between the average yearly temperature of Tokyo and Sapporo or Tokyo and Fukuoka? Explain your answer.

\_\_\_\_\_

4. **Activity** Imagine that you are going to study for three months in Japan. Based on the above graphs, what city and during what three-month span would you like to visit? Explain.