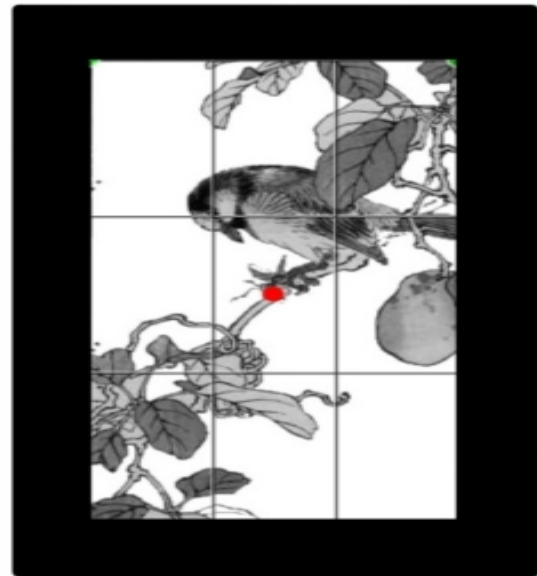
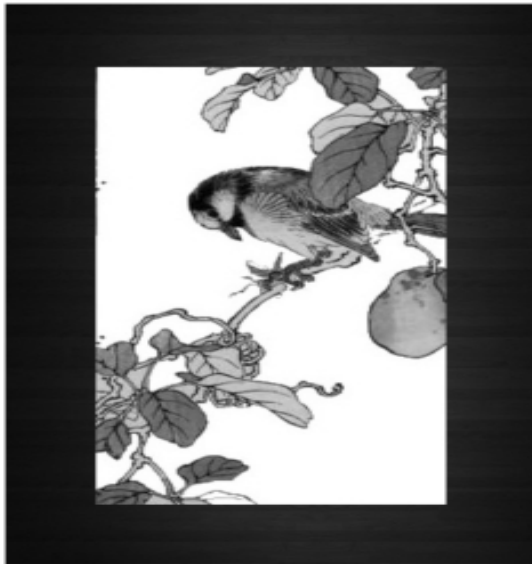


DYNAMIC COMPOSITION



Overlay a grid, three boxes wide and three boxes high.

Look at the places where the grid lines intersect.

The bird's eye, the bird's wing and the large clump of leaves all coincide with the intersections of vertical and horizontal grid lines.

Use the same type of grid (3 boxes by 3 boxes) to divide up your own paper before you begin a drawing. Position the important things in your picture so that they coincide with the intersection of the grid lines.