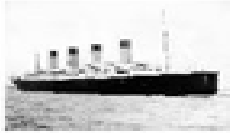


# TITANIC



1. What does the picture represent? What happened to this ship? When? Why?

---

---

---

2. Identify these people (name/job/type of passenger/survivor or not?) Which are fictional (=did not exist)?

Make sentences!



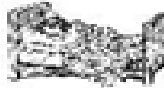
---

---

---

---

3. What were these passengers doing when the Titanic hit the iceberg?



---

---

---

---

4. April 1912. You are Elizabeth Dowdell. Write a letter to a friend to tell him about your sailing on the Titanic (job, activity when the Titanic collided with the iceberg, reactions, feelings, etc.)