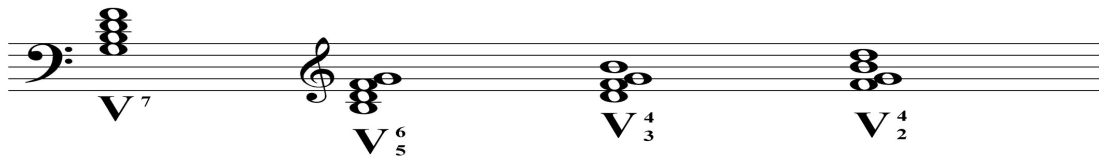
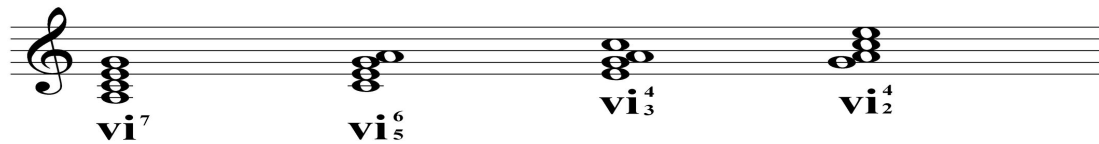


G dominant 7th: a major triad plus a **minor** 7th from the root



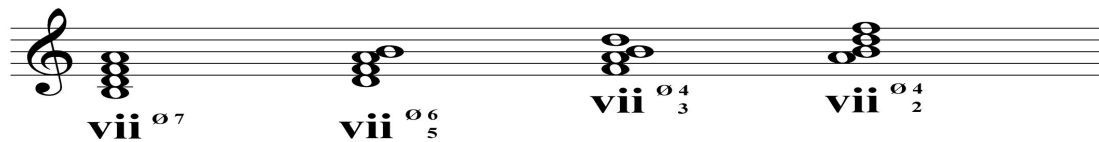
The major triad plus the minor 7th from the root note is what gives the dominant 7th its distinctive sound, different from that of the tonic and subdominant major 7th chords, both of which are made up of a major triad plus a **major** 7th from the root note.

A minor 7th: a major triad plus a **minor** 7th from the root



7

B half diminished : a diminished triad plus a **minor** 7th from the root.



This chord is half diminished because the interval between the A and the C in the root position chord is a **minor** 3rd and not a **diminished** 3rd. If the top note of the root position chord were A_b, the chord would be a diminished 7th and labeled **vii^{o7}**.