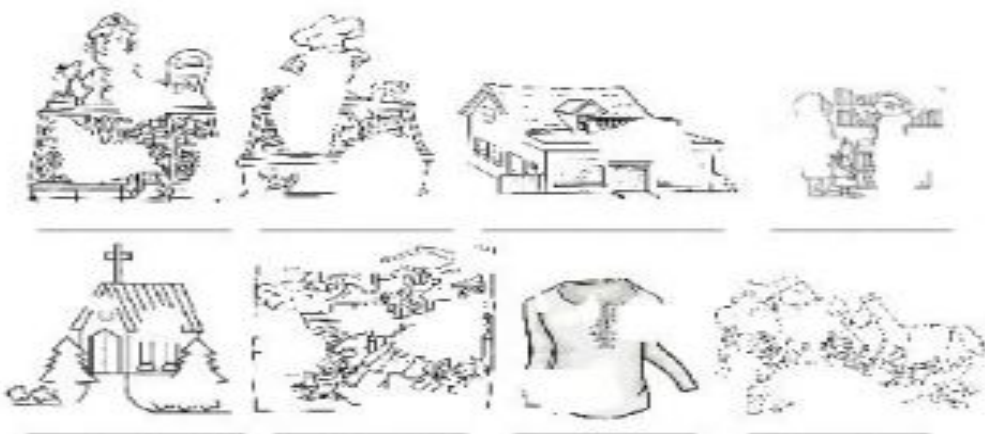


Which place in the town is it? Look and decide:

BUTCHER'S / BAKER'S / BOOKSTORE / CHURCH / ZOO / RESTAURANT / TOYSTORE / CLOTHES STORE



Which place in the town is it? Look and decide:

BUTCHER'S / BAKER'S / BOOKSTORE / CHURCH / ZOO / RESTAURANT / TOYSTORE / CLOTHES STORE

