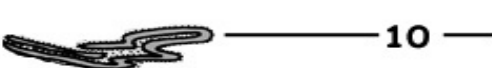
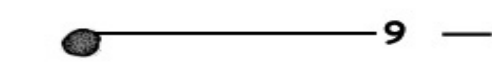
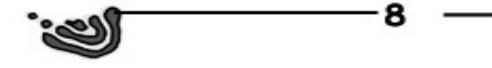
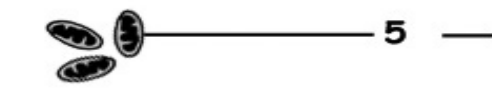
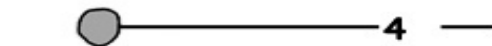
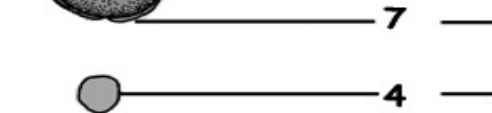
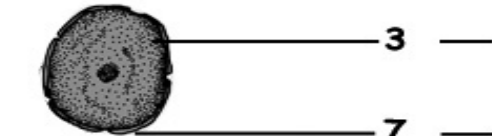
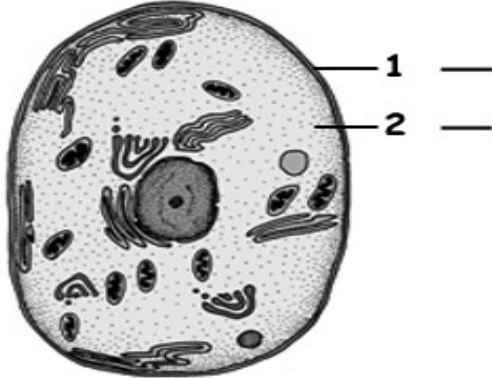


The Organelles

Choose the correct description for each organelle.



A. Mitochondria - Double-membraned organelles that break down sugar to make ATP to be used as energy by the cell.

B. Lysosome - Vesicles with digestive enzymes to break down waste and bacteria.

C. Plasma Membrane - The protective outside layer of the cell that lets some things in and keeps others out (semipermeable).

D. Golgi Apparatus - Made up of flat vesicles that package things to leave the cell – like hormones.

E. Cytoplasm - The watery medium in which the organelles float inside the cell.

F. Nucleus - The organelle that contains all our genetic information on 23 pairs of chromosomes making up our DNA.

G. Ribosomes - Little grains floating around inside the cell and on the rough ER where proteins are made.

H. Nuclear Membrane - Surround the nucleus and controls what goes in and out.

I. Vacuole - Membrane sacs for storage.

J. Rough Endoplasmic Reticulum (rough ER) - Folded membrane pathways spotted with ribosomes and making new membranes as needed.