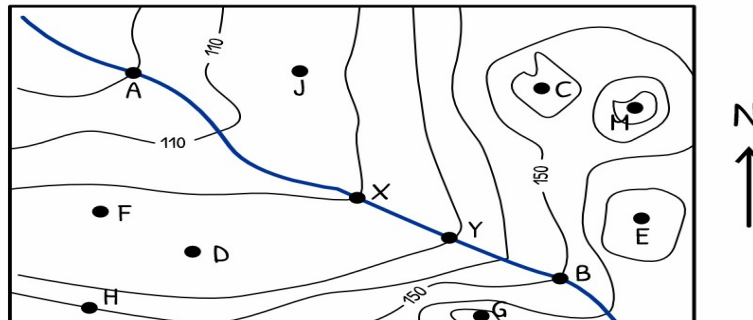


Name key Date \_\_\_\_\_

## Map Worksheet Topographic

The topographic map below shows elevations measured in feet.  
Points A, B, C, D, E, F, G, H, J, M, X, and Y are locations on the map.



1. In which direction is E from C? southeast
2. What is a possible elevation of point J? any value from 111 to 119 feet
3. How many hilltops are shown on the map? 2 hilltops
4. What is the highest possible elevation of point E? 169 feet
5. What is the lowest possible elevation of point M? 171 feet
6. What is the contour interval of this map? 10 feet
7. What are the elevations of the following points?  
A: 100      G: 160      C: 160