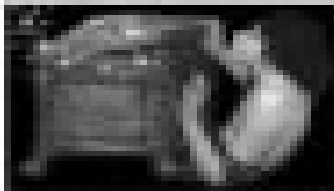


Greek Mythology



1



2



3



4

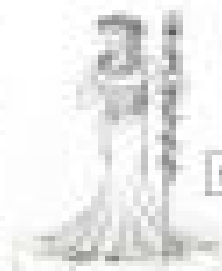
Q Complete the blanks and match the images with the descriptions.

*Mer - sea - Eros - love - god - Hermes - messenger - Hermes - messenger - wings - Aphrodite - shell - eagle - sword

Hermes was the messenger chosen by the gods to keep the _____ that contain all the bad things of the world.

Posidon was the _____ of earthquakes and floods, of mountains with, hunting and water animals. He was the father and protector of Atlantis, Poseidon for his people. He was part _____ and part human.

Aphrodite is the goddess of love and beauty. She was the sister of _____ and _____, the goddess of _____ and _____.



5

Eros was the god of _____, his symbols are the _____, the _____ and _____.

Zeus was the god of the sky, the king of the gods, ruler of _____, his symbols are a _____, an _____ and _____.



6

_____ was the goddess of love and beauty. Her symbols are the _____, the _____ and the _____.