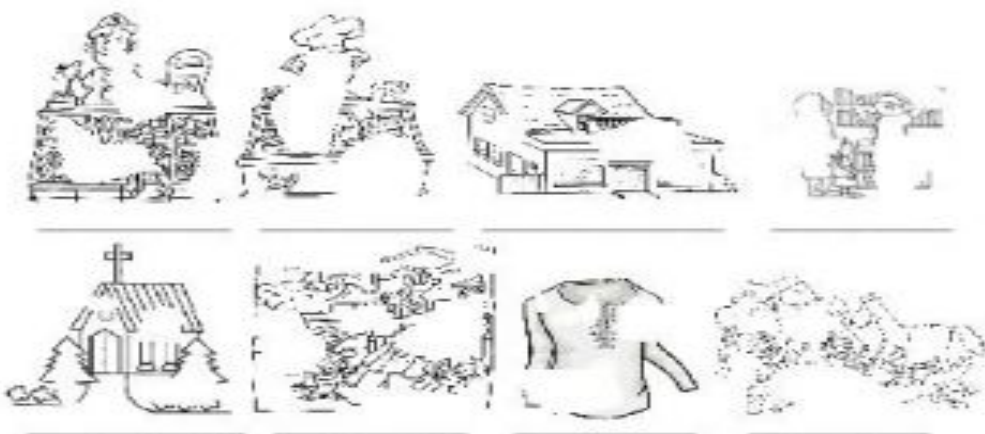


Which place in the town is it? Look and decide:

**BUTCHER'S / BAKER'S / BOOKSTORE / CHURCH / ZOO / RESTAURANT / TOYSTORE / CLOTHES STORE**



Which place in the town is it? Look and decide:

**BUTCHER'S / BAKER'S / BOOKSTORE / CHURCH / ZOO / RESTAURANT / TOYSTORE / CLOTHES STORE**

