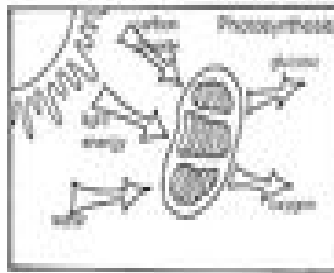
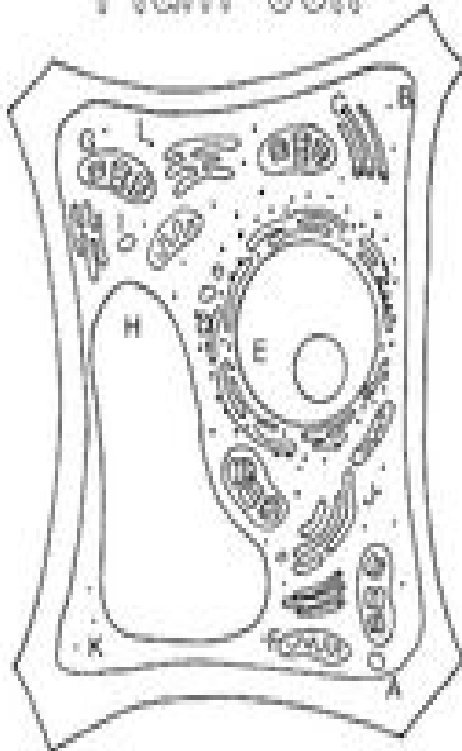


# Plant Cell



## Parts of a Cell

- A. cell wall\*
- B. cell membrane
- C. cytoskeleton
- D. endoplasmic reticulum
- E. nucleus
- F. mitochondria
- G. chloroplast\*
- H. vacuole
- I. lysosome
- J. golgi body
- K. cytoplasm
- L. ribosomes (dots)

\* only in plant cells

# Animal Cell

