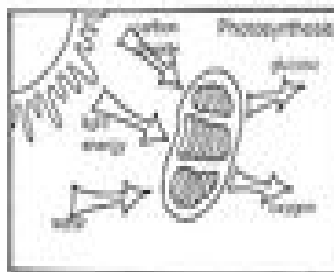
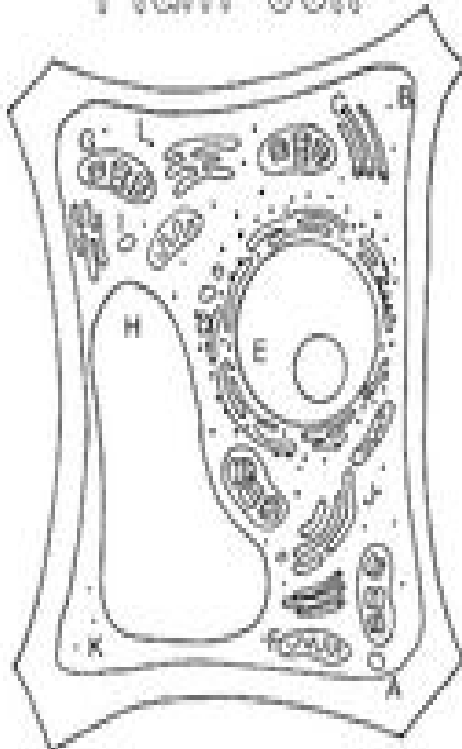
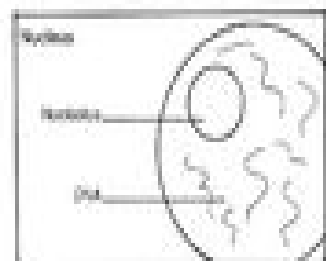
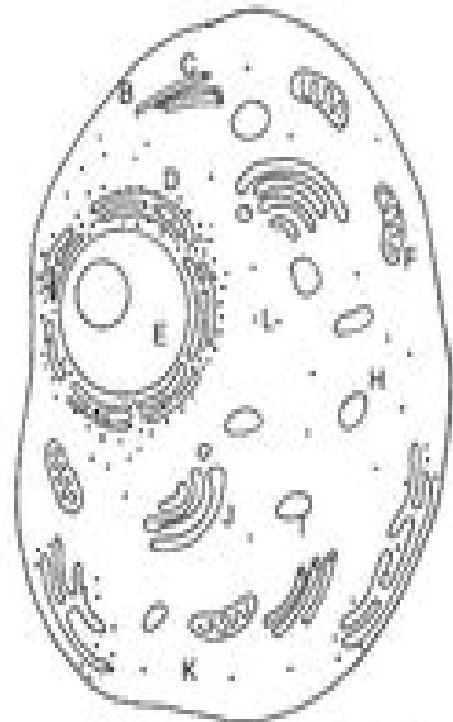


Plant Cell



Animal Cell



Parts of a Cell

- A. cell wall*
 - B. cell membrane
 - C. cytoskeleton
 - D. endoplasmic reticulum
 - E. nucleus
 - F. mitochondria
 - G. chloroplast*
 - H. vacuole
 - I. lysosome
 - J. golgi body
 - K. cytoplasm
 - L. ribosomes (dots)
- * only in plant cells