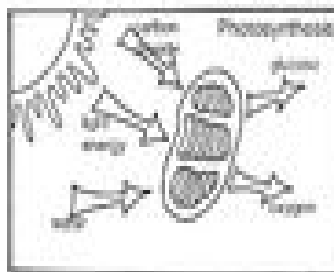
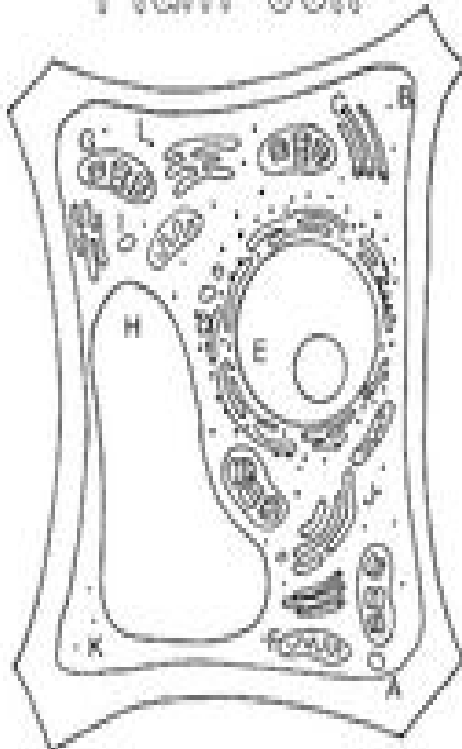
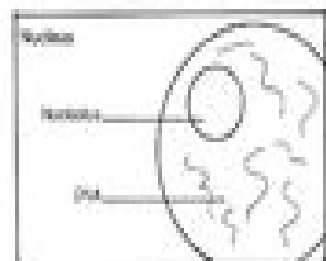
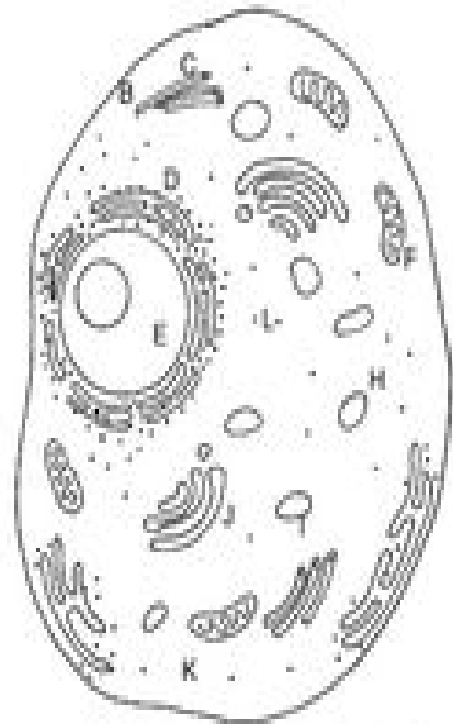


# Plant Cell



# Animal Cell



## Parts of a Cell

- A. cell wall\*
  - B. cell membrane
  - C. cytoskeleton
  - D. endoplasmic reticulum
  - E. nucleus
  - F. mitochondria
  - G. chloroplast\*
  - H. vacuole
  - I. lysosome
  - J. golgi body
  - K. cytoplasm
  - L. ribosomes (dots)
- \* only in plant cells