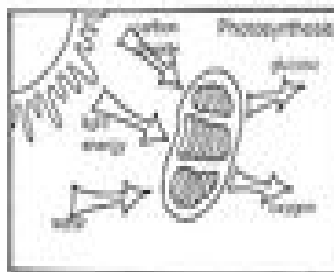
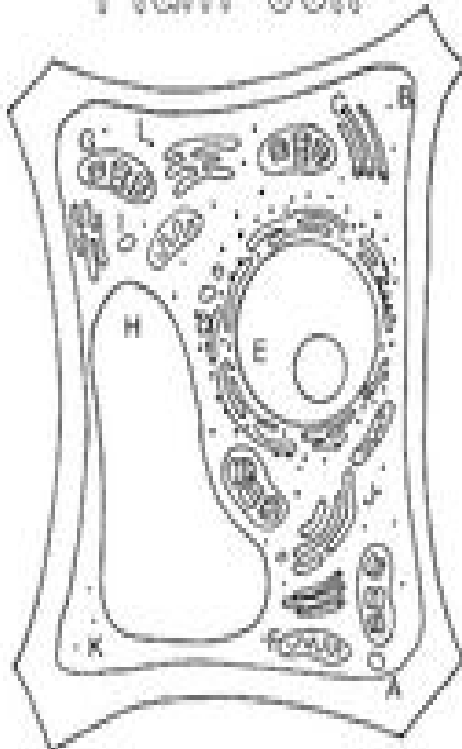
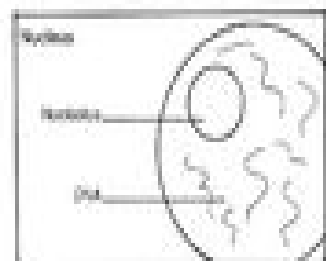
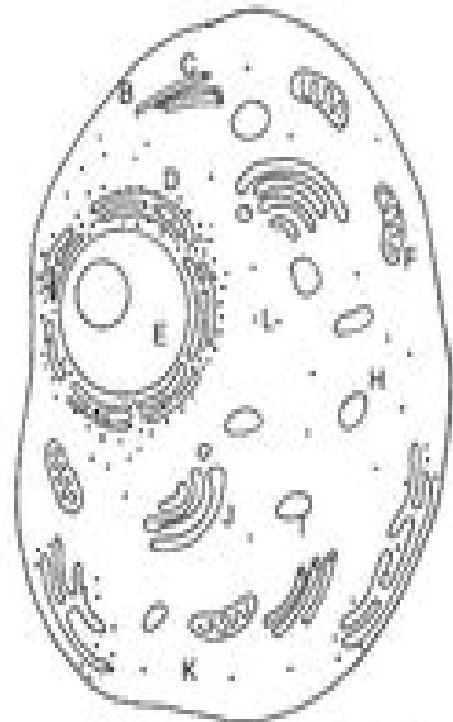


Plant Cell



Animal Cell



Parts of a Cell

- A. cell wall*
- B. cell membrane
- C. cytoskeleton
- D. endoplasmic reticulum
- E. nucleus
- F. mitochondria
- G. chloroplast*
- H. vacuole
- I. lysosome
- J. golgi body
- K. cytoplasm
- L. ribosomes (dots)

* only in plant cells