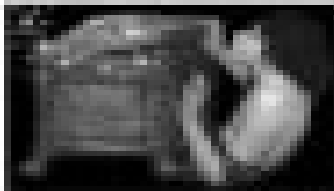


Greek Mythology



1



2



3



4

Q Complete the blanks and match the images with the descriptions.

Mercury - god - messenger - winged - helmet - caduceus - staff - snake - winged - sandals - sandals

Hermes was the messenger chosen by the gods to keep the _____ that contain all the bad things of the world.

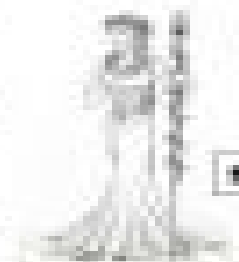
Pan was the _____ of shepherds and flocks, of mountain wilds, hunting and rustic music. He was the half-brother and assistant of Athena and Hermes. He was part _____ and part human.

Athena is said to be a bringer of gifts and messages to Zeus. She was the sister of _____ and Apollo. She is credited with the invention of the _____ on the mortal world.

Zeus was the god of _____ His symbols are the _____, the _____ and lightning.

Demeter was the goddess of the earth, the king of the gods, ruler of _____ His symbols are a _____, an _____ and a bull's head.

_____ was the goddess of justice and beauty. Her symbols are the _____, the apple and the dove.



5



6