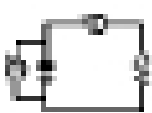


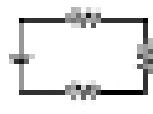
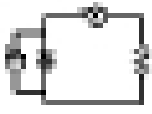
Multiple Choice

1. In a parallel circuit, the voltage across each branch is the same as the voltage across the entire circuit. Which of the following is true?



- A. True
- B. False

2. What happens when the switch in the circuit below is closed?



- A. The light bulb will glow.
- B. The light bulb will not glow.
- C. The resistor will glow.
- D. The resistor will not glow.

Multiple Choice

- 1. A circuit with a battery, a light bulb, and a resistor is shown below. Which of the following is true?



Multiple Choice

- 1. A circuit with a battery, a light bulb, and a resistor is shown below. Which of the following is true?

Multiple Choice

1. A circuit with a battery, a light bulb, and a resistor is shown below. Which of the following is true?



Multiple Choice

- 1. A circuit with a battery, a light bulb, and a resistor is shown below. Which of the following is true?