

DICHOTOMOUS KEY TO STREAM MACROINVERTEBRATES

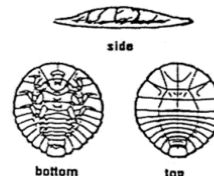
(Page 1)

Drawings in this key are from: Merrit-Cummins: *An Introduction to the Aquatic Insects of North America*, Copyright 1977 by Kendall/Hunt Publishing Company; Izaak Walton League of America (IWL); or McCafferty: *Aquatic Entomology*, © 1981 Boston: Jones and Bartlett Publishers.

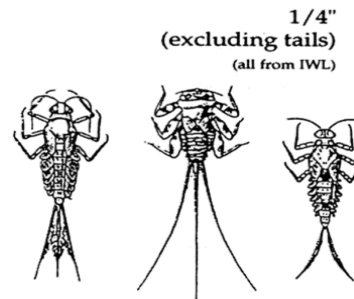
1. A. Segmented legs.....go to 2
- B. No segmented legs.....go to 14

2. A. 6 legs.....go to 3
- B. More than 6 legs.....go to 23

3. A. No wings, or wings not fully developed and do not cover entire body.....go to 4
- B. Wings cover entire body (but not legs), may appear beetle-like.....go to 26



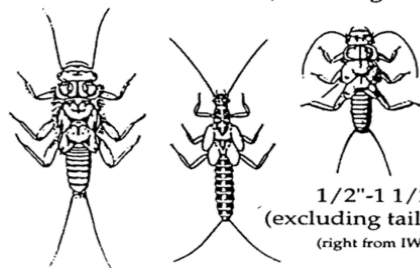
4. A. Body longer than it is wide.....go to 5
- B. Body oval & flat; head & legs concealed beneath body.....**WATER PENNY**
 (a type of beetle larva)
 Order Coleoptera, Family Psephenidae
 Feeding Group: SCRAPER



1/4"
(excluding tails)
(all from IWL)

5. A. 2 or 3 distinct hairlike tails; tails not fleshy or hooked, but may be fringed with hairs.....go to 6
- B. Not as above.....go to 7

6. A. 2-3 tails; platelike or hairlike gills along sides of abdomen.....**MAYFLY LARVA**
 Order Ephemeroptera
 Feeding Group: VARIES



(center from IWL) 1/4"-1"
(excluding tails)

- B. 2 tails; may have hairy gills under thorax.....**STONEFLY LARVA**
 Order Plecoptera
 Feeding Group: VARIES

1/2"-1 1/2"
(excluding tails)
(right from IWL)

(All drawings on this page are from McCafferty: *Aquatic Entomology*, except as noted)
Dichotomous Key provided courtesy of the Adopt-A-Stream Foundation from the Streamkeepers Field Guide, all rights reserved.