

The Staff - Bass Clef

The bass clef looks like a 9 with a tail.
 It looks like this:



The bass clef gives a handhold
 on the staff. It is the 4th line of
 the bass staff.

To draw the bass clef, draw
 a circle like this:



to form



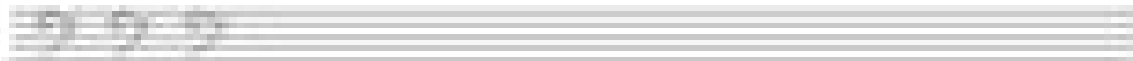
and draw



These are placed after the first seven letters of the alphabet (A through G):



1. Try drawing the bass clef eye by eye, using the dotted lines. Then draw the notes of your own.



2. Draw a bass clef at the beginning of the staff. Then write the notes across it, with dots.



3. Draw a solid clef at the beginning of the staff. Then draw the notes, followed by notes you can be writing on your hand, even placed on the staff, above it.

