

## Flower power



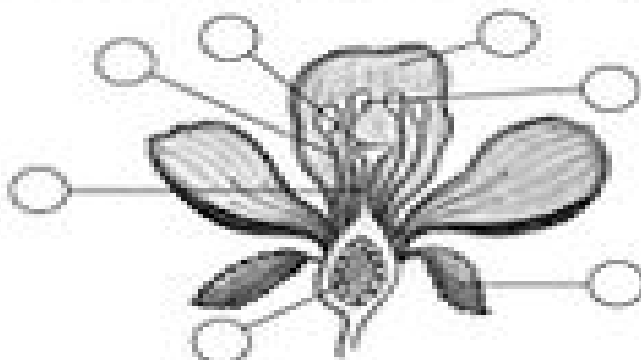
### Background knowledge

Flowers are the reproductive organ of a plant. The petals of a flower are often brightly colored and scented to attract insects and other pollinators. The stamen is the male part of the plant. It is composed of the filament (a stalk) that holds the anther, which produces the pollen. Pollen is needed for plants to produce seeds. The carpel is the female part of the flower. The top part of the carpel contains the ovary. The style is the neck of the carpel. The ovary is the swollen area at the bottom of the carpel. The ovary produces the seeds. The sepal is a leaf that protects a flower as a bud.

### Science activity

Write the correct numbers in the circles below to show the name of each part of the flower.

1 ovary    2 style    3 anther    4 filament    5 petal    6 sepal    7 stigma



### Science investigation

Go on a flower hunt and take pictures of the different flowers that you find. If it is wintertime, use magazines or the Internet to collect pictures of different flowers. Develop a system to classify the flowers such as the number of petals or stamens they have. Describe your system of classification.

