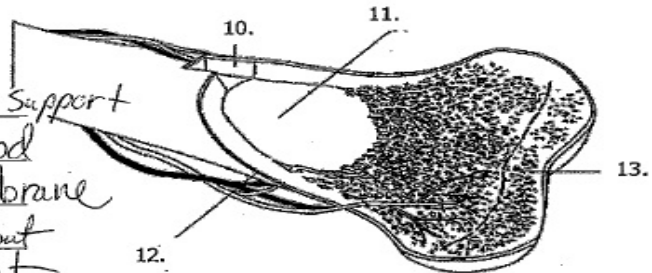


Label the numbered parts of the femur below in the spaces provided.

Word bank: Bone marrow Compact bone

Spongy bone Periosteum

10. Compact Bone Job: Strength & Support  
 11. Marrow Job: Produce blood  
 12. Periosteum Job: Outer membrane  
 13. Spongy Bone Job: Strength but light weight



14. S tibia  
 15. H fibula  
 16. A mandible  
 17. K skull  
 18. R patella  
 19. D vertebrae  
 20. N ribs  
 21. F carpals  
 22. G femur  
 23. I tarsals  
 24. J phalanges  
 25. B scapula  
 26. L clavicle  
 27. M sternum  
 28. E ulna  
 29. O pelvis  
 30. P radius  
 31. Q metacarpals  
 32. C humerus  
 33. T metatarsals

