

Time: o'clock - half past

Show the time on the analogue clock.

1. Gordon has a birthday at 1 o'clock.



2. Gordon has his birthday at half past 1.



3. Gordon has school at 2 o'clock.



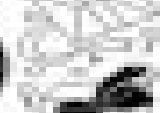
4. Gordon has his birthday at 3 o'clock.



5. Gordon has school at 4 o'clock.



6. Gordon has school at half past 4.



7. Gordon has school at 5 o'clock.



8. Gordon has school at half past 5.

