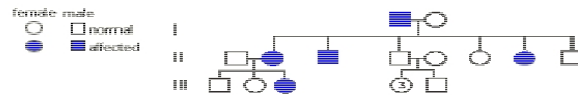


**Write all the possible genotypes**

<i>Expression of Dominant Trait</i>	<i>Genotype</i>	<i>Expression of Recessive Trait</i>	<i>Genotype</i>
Freckles [use F & f]	Ff, FF	No freckles	ff
Dark eyes [use B & b]		Blue eyes	
Free earlobes [use E & e]		Attached earlobes	
Six fingers / toes [use P & p]		Five fingers or toes	
Cheek dimples [use D & d]		Lack of dimples	
Full lips [use L & l]		Thin lips	
Widow's peak <i>W</i> = dominant widow's peak allele <i>w</i> = recessive straight hairline allele		Straight hair line	
Tongue roller [use R & r]		Cannot roll tongue	

**Solve the pedigree analysis problems**

A human geneticist determined the pedigree shown in the diagram with filled symbols showing the affected individuals. How is this pattern of inheritance described?



- A. autosomal dominant    B. autosomal recessive    C. sex linked recessive    D. sex linked dominant