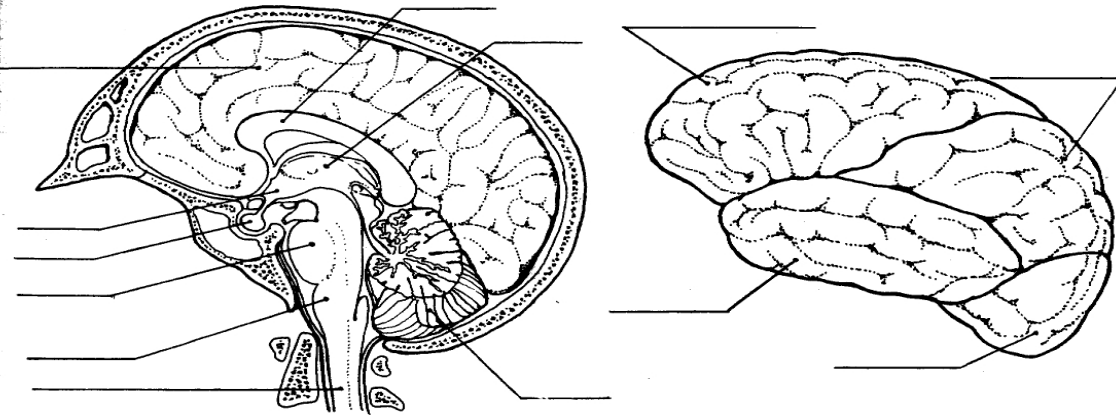


STRUCTURE OF THE BRAIN

Name _____

Label the correct parts of the brain and spinal cord on the diagram at the left below. Give the purpose/function of each part.

- cerebellum _____
- medulla oblongata _____
- thalamus _____
- hypothalamus _____
- corpus callosum _____
- pons _____
- spinal cord _____
- cerebrum _____
- pituitary gland _____



Lobes of the Cerebrum

The diagram to the right above shows the four major lobes of each hemisphere of the cerebrum: frontal, parietal, occipital and temporal. Label each lobe. Then, fill in the blanks below with the correct answers.

The _____ lobes control some body movements, reasoning, judgment and emotions. The sense of vision is located in the _____ lobe. The sense of hearing is interpreted in the _____ lobes. The _____ lobes interpret sensations such as pain, pressure, touch, hot and cold.