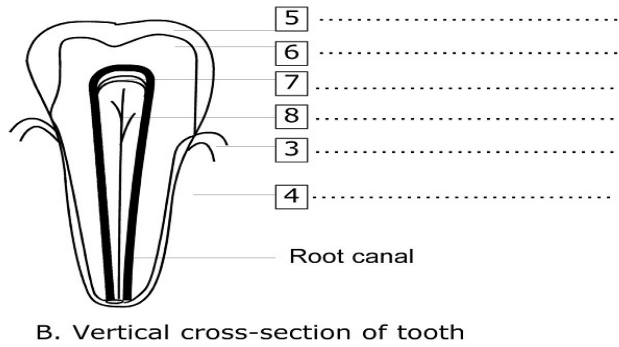
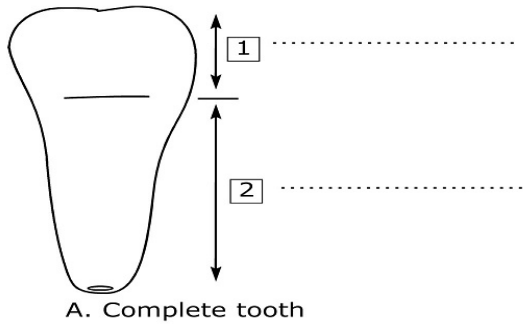


**Teeth and Health**

Structure of a tooth



Write the captions: 1 Crown, 2 Root, 3 Gum, 4 Jaw bone, 5 Enamel, 6 Dentine, 7 Blood vessels, 8 Nerve.

**Primary Teeth, Permanent Teeth**

At 2 years, a child may have 20 milk teeth.  
 At 6 years, the first permanent teeth appear.  
 At 12 years, a child may have 28 permanent teeth.  
 An adult has 32 teeth: 28 teeth plus 4 wisdom teeth. A full set of wisdom teeth does not always appear.

Circle the correct answer.

An adult has  more  fewer teeth than a child.

Link the questions with the correct answers.

Milk teeth  are not replaced if they fall out.  
 Adult teeth  are replaced when they fall out.