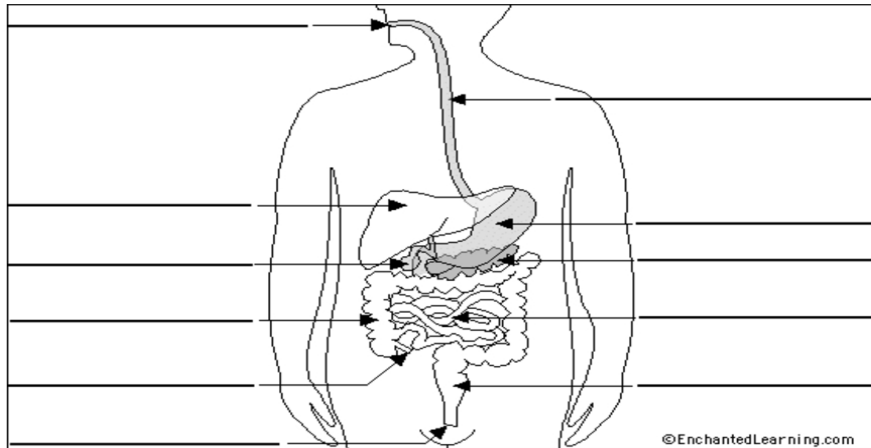


Label the Digestive System

Name _____

Read the definitions below, then label the [digestive system](#) anatomy diagram.



anus - the opening at the end of the digestive system from which feces exit the body.

appendix - a small sac located near the start of the large intestine.

esophagus - the long tube between the mouth and the stomach. It uses rhythmic muscle movements (called peristalsis) to force food from the throat into the stomach.

gall bladder - a small, sac-like organ located by the duodenum. It stores and releases bile (a digestive chemical which is produced in the liver) into the small intestine.

large intestine - the long, wide tube that food goes through after it goes through the small intestine.

liver - a large organ located above and in front of the stomach. It filters toxins from the blood, and makes bile (which breaks down fats) and some blood proteins.

mouth - the first part of the digestive system, where food enters the body. Chewing and salivary enzymes in the mouth are the beginning of the digestive process (breaking down the