

THE MAJOR ENDOCRINE ORGANS

4. Figure 9-1 depicts the anatomical relationships between the hypothalamus and the anterior and posterior lobes of the pituitary in a highly simplified way. First, identify each of the structures listed below by color coding and coloring them on the diagram. Then, on the appropriate lines write in the names of the hormones that influence each of the target organs shown at the bottom of the diagram. Color the target organ diagrams as you like.

- | | |
|--|---|
| <input type="radio"/> Hypothalamus | <input type="radio"/> Anterior pituitary |
| <input type="radio"/> Turk's saddle of the sphenoid bone | <input type="radio"/> Posterior pituitary |

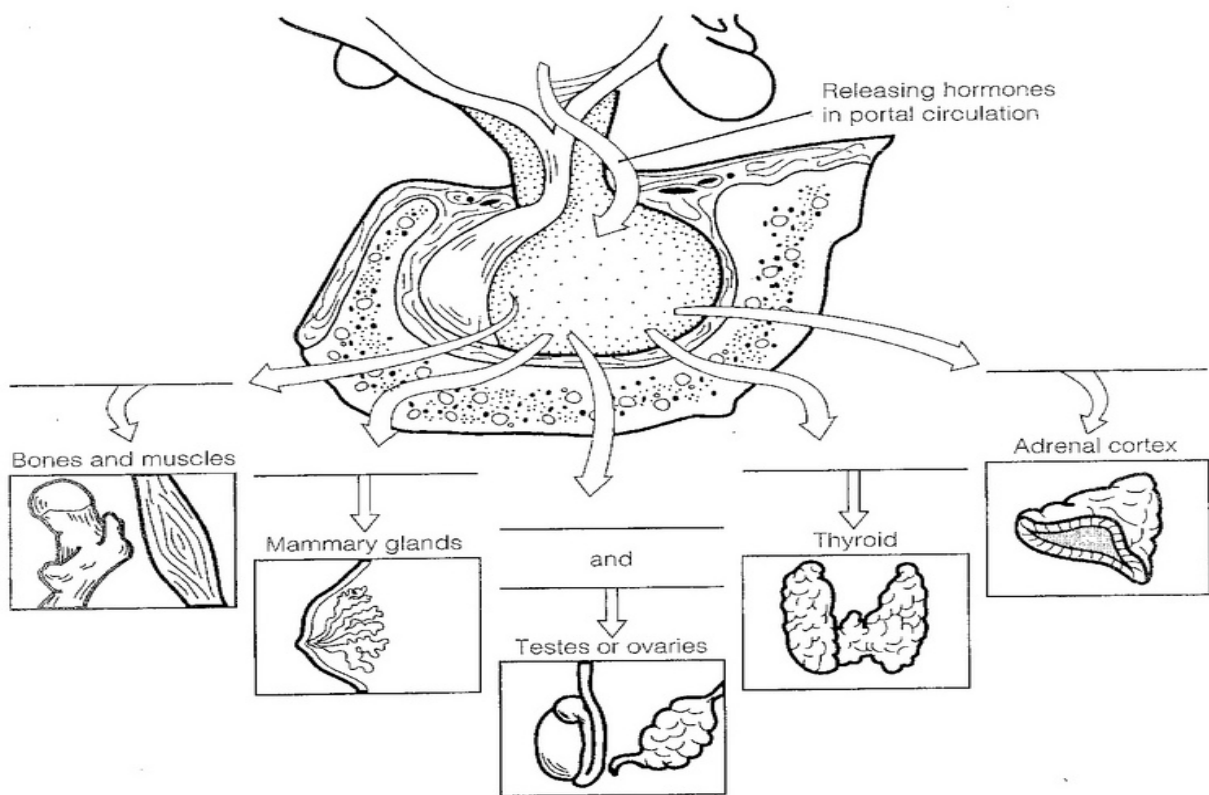


Figure 9-1