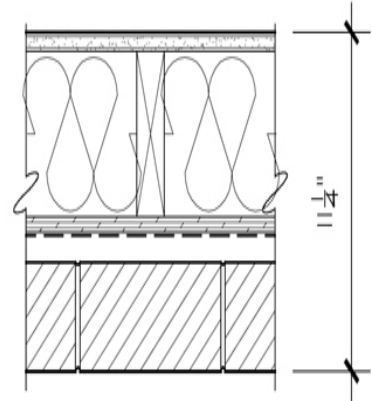


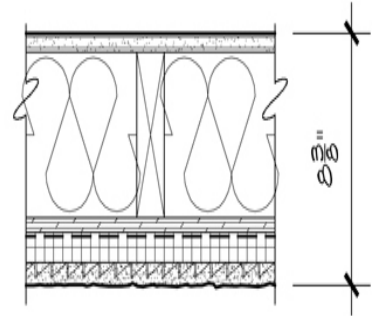
1A

3 5/8" FACE BRICK WITH 1" AIR GAP WITH VAPOR BARRIER ON 1/2" EXTERIOR GRADE PLYWOOD 2X6 WOOD STUDS @ 16" ON CENTER WITH 5/8" GYPSUM BOARD WITH TEXTURE FINISH TO BE APPROVED BY THE ARCHITECT



3A

EXTERIOR WALL - 2X6 WOOD STUDS @ 16" O.C. 5/8" GYPSUM WALL BOARD WITH TEXTURE FINISH APPROVED BY ARCHITECT ON INTERIOR SIDE. 1/2" EXTERIOR GRADE PLYWOOD SHEATHING W/ VAPOR BARRIER, 1" INSULATION BOARD AND 3/4" HYBRID STUCCO SYSTEM ON THE EXTERIOR SIDE.



7A

INTERIOR WALL - 2X6 WOOD STUDS @ 16" O.C. W/ 5/8" GYPSUM WALL BOARD WITH TEXTURE FINISH APPROVED BY ARCHITECT ON ONE SIDE. CEMENTITIOUS BACKER BOARD @ TILE INSTALLATION

