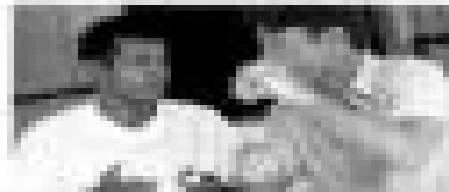


Complete the dialogues with the correct form of the verb – present or infinitive

MAN: Do you ever **enjoy** (enjoy) **swimming** (swim)?



WOMAN: Yeah, but not **swim** (swim) **often** (often).

MAN: Do you ever **visit** (visit) **London** (London)?

WOMAN: Yes, I **visit** (visit) **London** (London) **often** (often). I **love** (love) **it** (it).

**Swimming** (swim) **is** (is) **my** (my) **favorite** (favorite).

MAN: **Swimming** (swim) **is** (is) **my** (my) **favorite** (favorite) **too** (too).

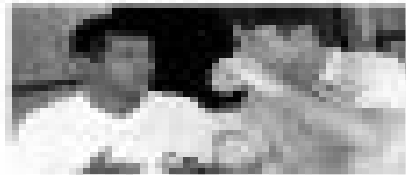
WOMAN: Do you like **visiting** (visit) **London** (London)?

MAN: Yes, I **like** (like) **visiting** (visit) **London** (London). I **love** (love) **it** (it).

WOMAN: I **love** (love) **visiting** (visit) **London** (London) **too** (too).

Complete the dialogues with the correct form of the verb – present or infinitive

MAN: Do you ever **enjoy** (enjoy) **swimming** (swim)?



WOMAN: Yeah, but not **swim** (swim) **often** (often).

MAN: Do you ever **visit** (visit) **London** (London)?

WOMAN: Yes, I **visit** (visit) **London** (London) **often** (often). I **love** (love) **it** (it).

**Swimming** (swim) **is** (is) **my** (my) **favorite** (favorite).

MAN: **Swimming** (swim) **is** (is) **my** (my) **favorite** (favorite) **too** (too).

WOMAN: Do you like **visiting** (visit) **London** (London)?

MAN: Yes, I **like** (like) **visiting** (visit) **London** (London). I **love** (love) **it** (it).

WOMAN: I **love** (love) **visiting** (visit) **London** (London) **too** (too).