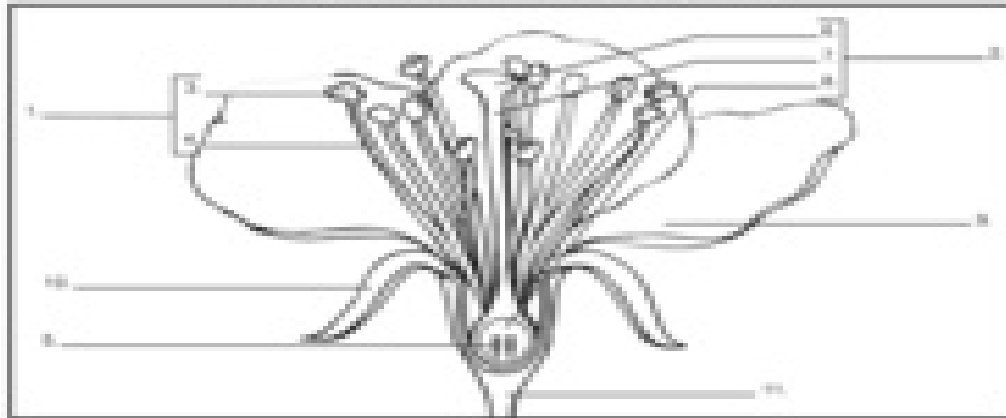


Playing an Important Part



Parts of a Flower

- anther • ovules • pistil • sepal • stigma • ovary
- filament • petal • receptacle • stamen • style

Use the diagram above and the clues to help you fill in the correct plant parts.

1. _____ —male reproductive part of a flower
2. _____ —female reproductive part of a flower
3. _____ —produces pollen grains, which develop sperm
4. _____ —supports the anther
5. _____ —become the seeds when sperm cells fertilize the egg cells
6. _____ —sticky, pollen-receptive part of the pistil
7. _____ —the stalk of the pistil down which the pollen tube grows
8. _____ —contains the ovules and becomes the fruit
9. _____ —colorful part of a flower used to attract insects and birds
10. _____ —protects the bud of a young flower
11. _____ —reproductive parts of a plant are attached here

Bonus Box: What do you think is the most important part of the flower? Defend your answer on the back of this paper.