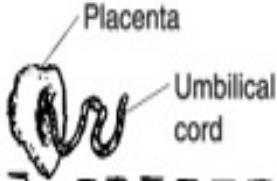


PLACENTALS



MONOTREMES
Platypus

MARSUPIALS
Kangaroo

Core Insectivores
Moles

Chiroptera
Bats

Perissodactyla
Horse: uneven toes

Artiodactyla
Camel: even toes

Edentata
Anteaters

Proboscidea
Elephants

Rodentia
Beavers

Sirenia
Sea cows (manatees)

Cetacea
Whales

Carnivora
Dogs

Lagomorpha
Rabbits

Primates
Humans, monkeys