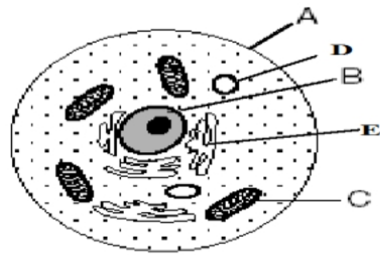
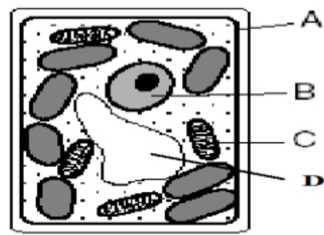


1. State three parts of the cell theory. [21]

2. Base your answers to the chart below on the diagrams below of the two cells below and on your knowledge of biology. [70]



Animal cell



Plant cell

Letter of Structure	Name of Structure	Function of Structure
A		
B		
C		
D		
E		

3. Identify one process that is carried out in cell Y that is not carried out in cell X. [7]