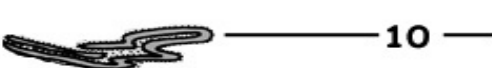
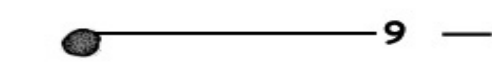
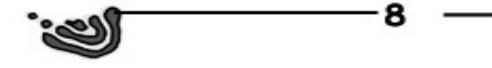
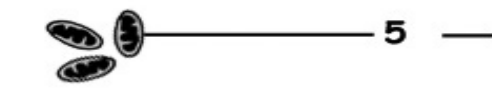
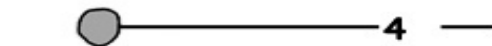
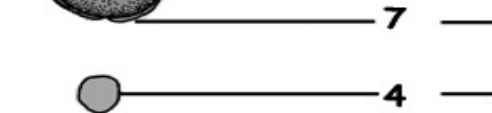
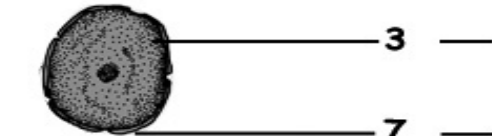
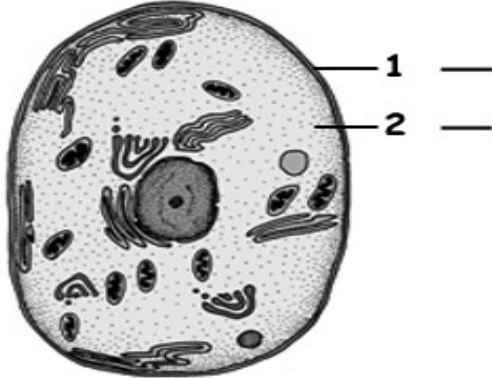


## The Organelles

Choose the correct description for each organelle.



**A. Mitochondria** - Double-membraned organelles that break down sugar to make ATP to be used as energy by the cell.

**B. Lysosome** - Vesicles with digestive enzymes to break down waste and bacteria.

**C. Plasma Membrane** - The protective outside layer of the cell that lets some things in and keeps others out (semipermeable).

**D. Golgi Apparatus** - Made up of flat vesicles that package things to leave the cell – like hormones.

**E. Cytoplasm** - The watery medium in which the organelles float inside the cell.

**F. Nucleus** - The organelle that contains all our genetic information on 23 pairs of chromosomes making up our DNA.

**G. Ribosomes** - Little grains floating around inside the cell and on the rough ER where proteins are made.

**H. Nuclear Membrane** - Surround the nucleus and controls what goes in and out.

**I. Vacuole** - Membrane sacs for storage.

**J. Rough Endoplasmic Reticulum (rough ER)** - Folded membrane pathways spotted with ribosomes and making new membranes as needed.