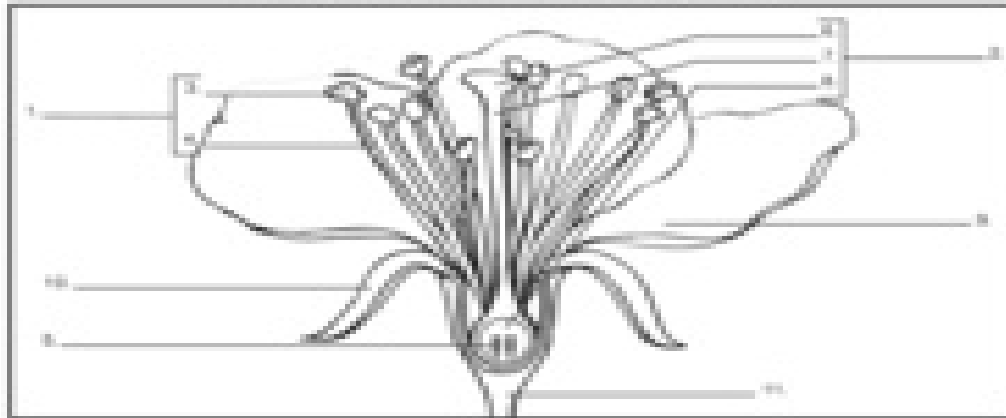


### Playing an Important Part



#### Parts of a Flower

- anther      • ovules      • pistil      • sepal      • stigma      • ovary
- filament    • petal      • receptacle    • stamen    • style

Use the diagram above and the clues to help you fill in the correct plant parts.

1. \_\_\_\_\_ —male reproductive part of a flower
2. \_\_\_\_\_ —female reproductive part of a flower
3. \_\_\_\_\_ —produces pollen grains, which develop sperm
4. \_\_\_\_\_ —supports the anther
5. \_\_\_\_\_ —become the seeds when sperm cells fertilize the egg cells
6. \_\_\_\_\_ —sticky, pollen-receptive part of the pistil
7. \_\_\_\_\_ —the stalk of the pistil down which the pollen tube grows
8. \_\_\_\_\_ —contains the ovules and becomes the fruit
9. \_\_\_\_\_ —colorful part of a flower used to attract insects and birds
10. \_\_\_\_\_ —protects the bud of a young flower
11. \_\_\_\_\_ —reproductive parts of a plant are attached here

**Bonus Box:** What do you think is the most important part of the flower? Defend your answer on the back of this paper.