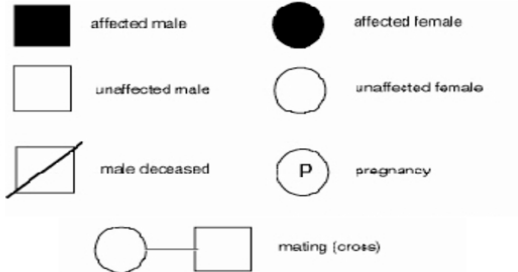


Name:
Hour:
Date:

Pedigree Practice Worksheet

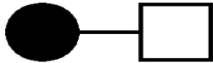
Part I



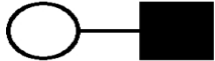
1. Do a punnett square for the cross shown below between a male and female, both with Hemophilia, an X-linked recessive disease. Females are represented by a circle and males by a square. Darkened shapes mean the individual has the disease.



2. Write the genotypes of the parents next to their shapes. Then do a punnett square for the autosomal recessive disease in the cross shown below between a male and female.



3. The father shown below has Hemophilia, an X-linked recessive disorder. If this couple had a son, could the son have the disease? What genotype(s) would be possible for that son?



4. The couple shown by the pedigree shown below, have 2 children, 1 girl with the disease and 1 boy without the disease as shown. What is the mode of inheritance? (is the disease autosomal recessive, autosomal dominant, or X-linked recessive?) Explain why you think this. Fill in the genotypes to help you answer this.

