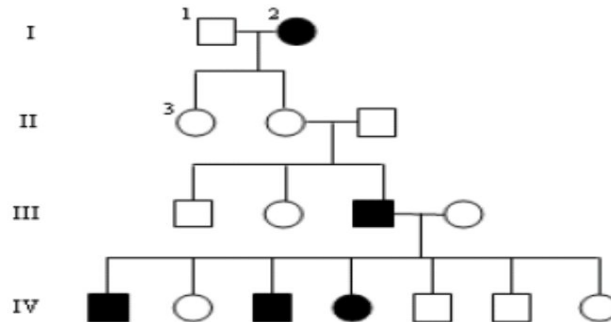


Name : _____

Date : _____

Pedigree Genetics Worksheet

Use the pedigree below to answer 1-5



1. In a pedigree, a square represents a male. If it is darkened he has hemophilia; if clear, he had normal blood clotting.

- How many males are there?
- How many males have hemophilia?

2. A circle represents a female. If it is darkened, she has hemophilia; if open she is normal.

- How many female are there?
- How many females have hemophilia?

3. A marriage is indicated by a horizontal line connecting a circle to a square.

- How many marriages are there?

4. A line perpendicular to a marriage line indicates the offspring. If the line ends with either a circle or a square, the couple had only one child. However, if the line is connected to another horizontal line, then several children were produced, each indicated by a short vertical line connected to the horizontal line.

The first child born appears to the left and the last born to the right.

- How many children did the first couple (couple in row I) have?
- How many children did the third couple (couple in row III) have?

5. Level I represent the first generation, level II represents the second generation.

- How many generations are there?
- How many members are there in the fourth generation?

Answer key :

1. a. 8
b. 3

2. a. 8
b. 2

3. a. 8

4. a. 2
b. 7

5. a. 4
b. 7