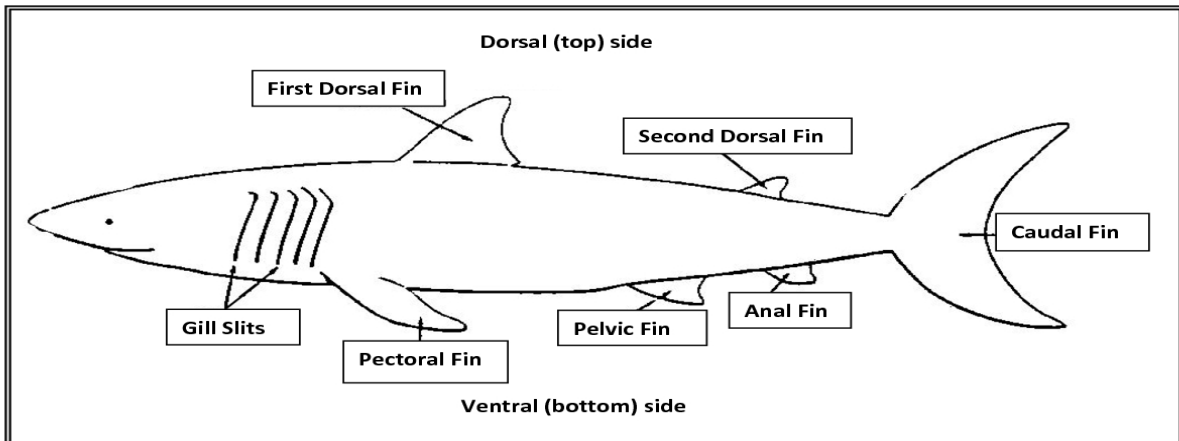


Shark Dichotomous Key Lab

Classification is a way of separating a large group of closely related organisms into smaller subgroups. With such a system, identification of an organism is easy. The scientific names of organisms are based on the classification systems of living organisms.

The scientific name is made from two taxon (levels of classification): Genus and species. To classify an organism, scientists often use a dichotomous key. A dichotomous key is a listing of specific characteristics, such as structure and behavior, that allow organisms to be identified through a process of elimination.

Use the shark diagram below to help identify important physical features



To use a the key **ALWAYS** start at statement 1 for each new shark. Read the (A) and (B) statements and follow the directions of the most correct statement.

If the statement instructs to go to another statement, follow directions and then choose the best of the two new statementst and continue.

If the statement ends in a Family name, write that on the line below the shark.

Don't forget to do the questions on the back of the shark pictures