

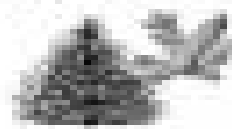
# Types of trees

There are two main types of trees: **coniferous** and **deciduous**. There are around 60,000 species of coniferous trees and 20,000 species of deciduous trees.

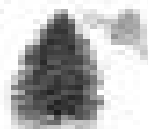
There are two main types of trees: **coniferous** and **deciduous**.

## Coniferous trees

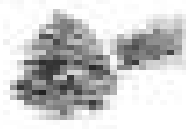
Coniferous trees have green needles and form a pointed shape. The leaves are concentrated on either side, pointed needles, a woody trunk. Coniferous trees have a woody trunk. When coniferous trees die, they turn into wood. There are three main groups of coniferous trees: **spruce**, **fir** and **pine**. They are common in cold climates.



Spruce



Fir



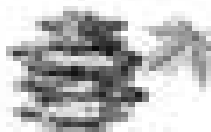
Pine

## Deciduous trees

Deciduous trees are called so they lose their leaves in winter. They have broad leaves. The leaves are flat and green in summer and turn yellow and orange in autumn. They have a woody trunk and a rounded shape. There are many different types of deciduous trees. Some of the most common are **oak**, **maple**, **birch** and **beech**. They are common in temperate climates.



Oak



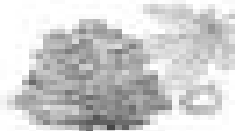
Maple



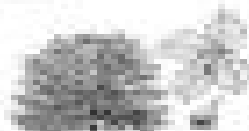
Birch



Beech



Chestnut



Sycamore



Larch