

## ☆ TRIVIA TEST ☆

1. What is the Best Way to Paint a Rabbit?

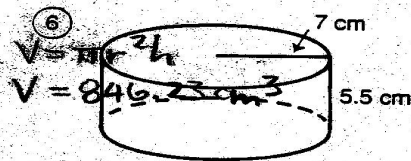
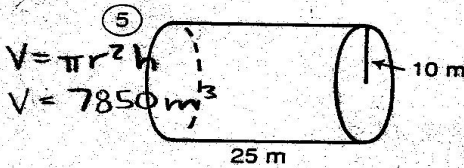
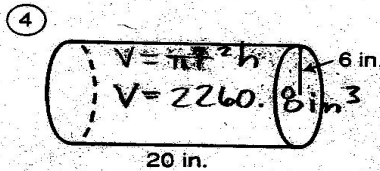
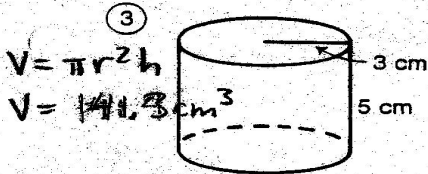
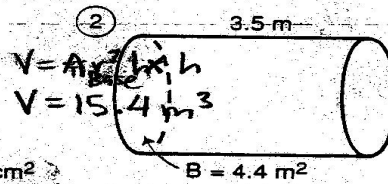
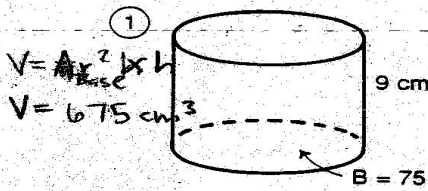
W I T H H A R E S P R A Y  
4 7 2 8 8 3 11 5 10 1 11 3 6

2. What Candy Do Kids Eat on the Playground?

R E C E S S P I E C E S  
11 5 9 5 10 10 1 7 5 9 5 10

Do each exercise and find your answer in the answer column. Write the letter of the answer above the exercise number each time it appears in the code. Use 3.14 for  $\pi$ .

I. Find the volume of each cylinder.



⑦  $r = 8$  in.  $V = \pi r^2 h$   $h = 3$  in.  $V = 602.88$  in<sup>3</sup>      ⑧  $r = 2.5$  mm  $V = \pi r^2 h$   $h = 60$  mm  $V = 1177.5$  mm<sup>3</sup>      ⑨  $d = 10$  m  $V = \pi r^2 h$   $h = 7.2$  m  $V = 565.2$  m<sup>3</sup>

II. Solve.

⑩ Shawn is making a candle using a cylindrical mold with a radius of 2 cm and a height of 30 cm. How many cubic centimeters of wax are needed for the candle?  $V = \pi r^2 h$   $V = 376.8$  cm<sup>3</sup>

⑪ A mug in the shape of a cylinder has a base with a radius of 4 cm. How many milliliters of liquid does it hold if filled to a height of 9 cm? (Hint: 1 cm<sup>3</sup> holds 1 mL.)  $V = \pi r^2 h$   $V = 452.16$  mL

### Answers

- Ⓜ 814.13 cm<sup>3</sup>
- Ⓒ ~~565.2 m<sup>3</sup>~~
- Ⓝ 381.36 mL
- Ⓐ ~~141.3 cm<sup>3</sup>~~
- Ⓑ 14.8 m<sup>3</sup>
- Ⓘ ~~602.88 in.<sup>3</sup>~~
- Ⓟ ~~675 cm<sup>3</sup>~~
- Ⓤ 7,490 m<sup>3</sup>
- ⓗ ~~1,177.5 mm<sup>3</sup>~~
- Ⓡ ~~452.16 mL~~
- Ⓦ ~~2,260.8 in.<sup>3</sup>~~
- Ⓛ 382.8 cm<sup>3</sup>
- Ⓣ ~~15.4 m<sup>3</sup>~~
- Ⓨ ~~846.23 cm<sup>3</sup>~~
- Ⓞ 717.8 in.<sup>3</sup>
- Ⓢ ~~376.8 cm<sup>3</sup>~~
- ⓖ 1,224.5 mm<sup>3</sup>
- Ⓔ ~~7,850 m<sup>3</sup>~~
- Ⓓ 614.2 m<sup>3</sup>