

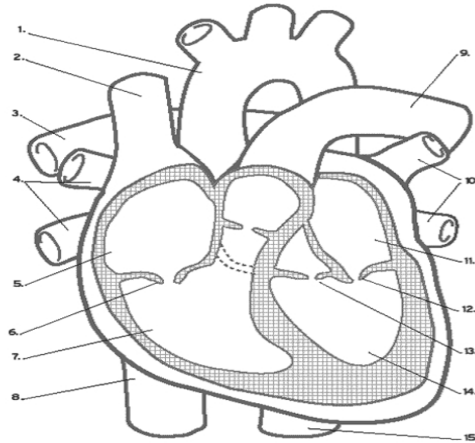
Sheep Heart Observation lab

Name _____ Date _____ Class _____

Purpose: To review the structural characteristics of the human heart and to examine the major features of a mammalian heart.

Procedure A—The Human Heart

Label the diagram of the human heart below:



1.	_____
2.	_____
3.	_____
4.	_____
5.	_____
6.	_____
7.	_____
8.	_____
9.	_____
10.	_____
11.	_____
12.	_____
13.	_____
14.	_____
15.	_____

Procedure B—Observation of a Sheep Heart - External Anatomy

1. Obtain a preserved sheep heart.
2. Place the heart in a dissecting tray with its ventral surface up (See Figure 2 below). Proceed as follows:
Locate the *visceral pericardium*, which appears as a thin, transparent layer on the surface of the heart. Also

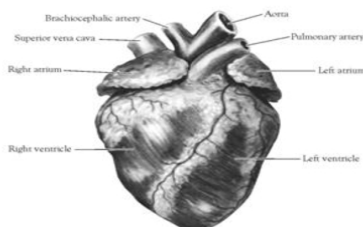


Figure 1. Heart (Anterior View)

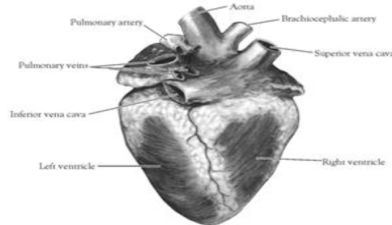


Figure 2. Heart (Posterior View)

note the abundance of fat along the paths of various blood vessels. This adipose tissue occurs in the loose connective tissue that underlies the visceral pericardium. Identify the following:

right atrium, right ventricle, left atrium, left ventricle, coronary arteries

3. Examine the dorsal surface of the heart (Figure 1). Locate the stumps of two relatively thin-walled blood vessels that enter the

right atrium. Demonstrate this connection by passing a slender probe through them. The upper vessel is the *superior vena cava*, and the lower one is the *inferior vena cava*.