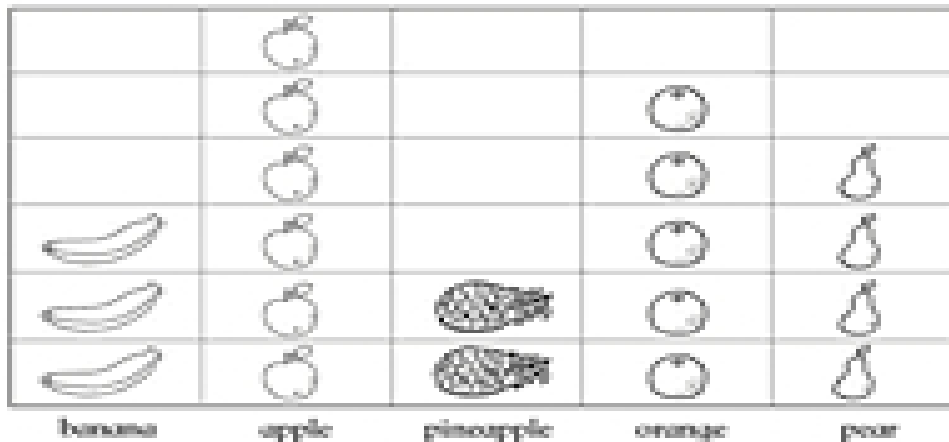


# Bar graphs



Fruit



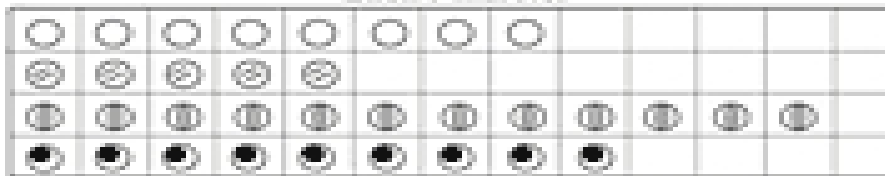
How many pears are there?       How many bananas are there?

The graph shows 6 .      The graph shows 2 .

How many more oranges are there than bananas?

How many apples and pears are there altogether?

Ellen's marbles



How many does Ellen have?       How many does Ellen have?

How many fewer than does she have?

How many and does she have altogether?