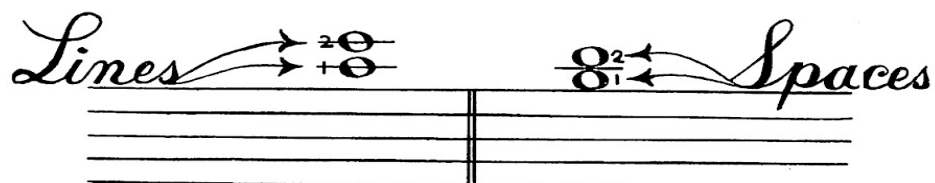


# LINES AND SPACES ABOVE THE STAFF



The lines above and below the staff are known as **LEGER LINES**. Music written for the violin may use as many as **FIVE LEGER LINES ABOVE** the **STAFF**.

1 Write in the **NUMBER** of the **LEGER LINE** or **SPACE** on which each of the following notes is placed. "A **BOVE**" is used for "above the staff."

1 | S | above     |  | above     |  | above     |  | above     |  | above     |  | above

2 | S | above     |  | above     |  | above     |  | above     |  | above     |  | above

2 Write a whole note (  $\circ$  ) on the correct **LINE** or **SPACE** over each box. Make your own **LEGER LINES**.

2 | S | above    1 | L | above    2 | L | above    1 | S | above    2 | S | above    1 | L | above